

419 PARK AVENUE SOUTH

Can be delivered as turnkey
Deli/cafe space
with improvements of \$1.5M

7,212 SF	Ground Floor
2,788 SF	Mezzanine
319 - 1,873 SF	Basement

10K RETAIL SPACE FOR LEASE



Member
REBNY
REAL ESTATE BOARD OF NEW YORK

Owners & Managers

PETER WEISS
Senior Executive Managing Director
212.696.7161
pweiss@walter-samuels.com

For More Information Contact:
STEVE FOREST
Senior Executive Managing Director
212.696.7113
sforest@walter-samuels.com

419 Park Avenue South, 15th Floor | walter-samuels.com | 212.685.6200

Property Information

Corner of Park Avenue South & 29th Street

Space

Ground Floor Approx: **7,212 SF**

Mezzanine Approx: **2,788 SF**

Basement Approx: **319 - 1,873 SF**

Ceiling height

Ground Floor: **19 - 16 FT**

Mezzanine: **9 - 8'25" FT**

Frontage: **40 FT on Park Ave S.**
100+ FT on 29th Street

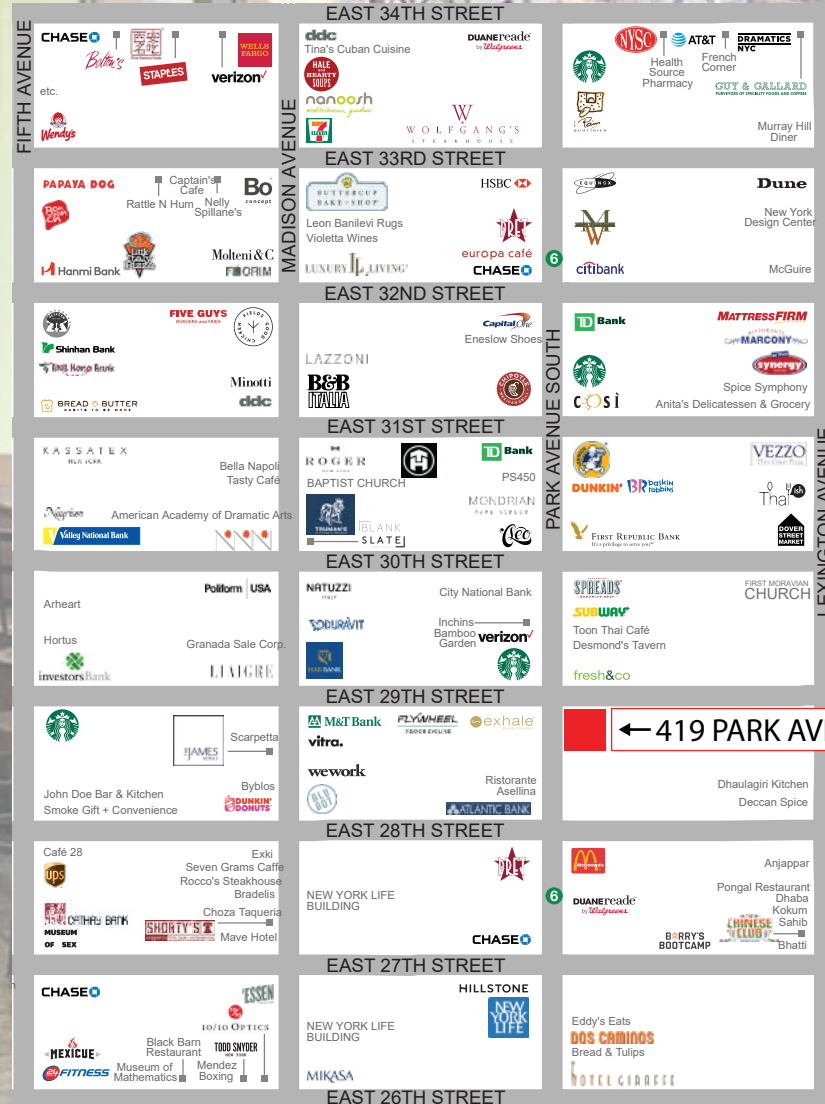
Term: **Long Term**

Possession: **Immediate**

Rent: **Upon Request**

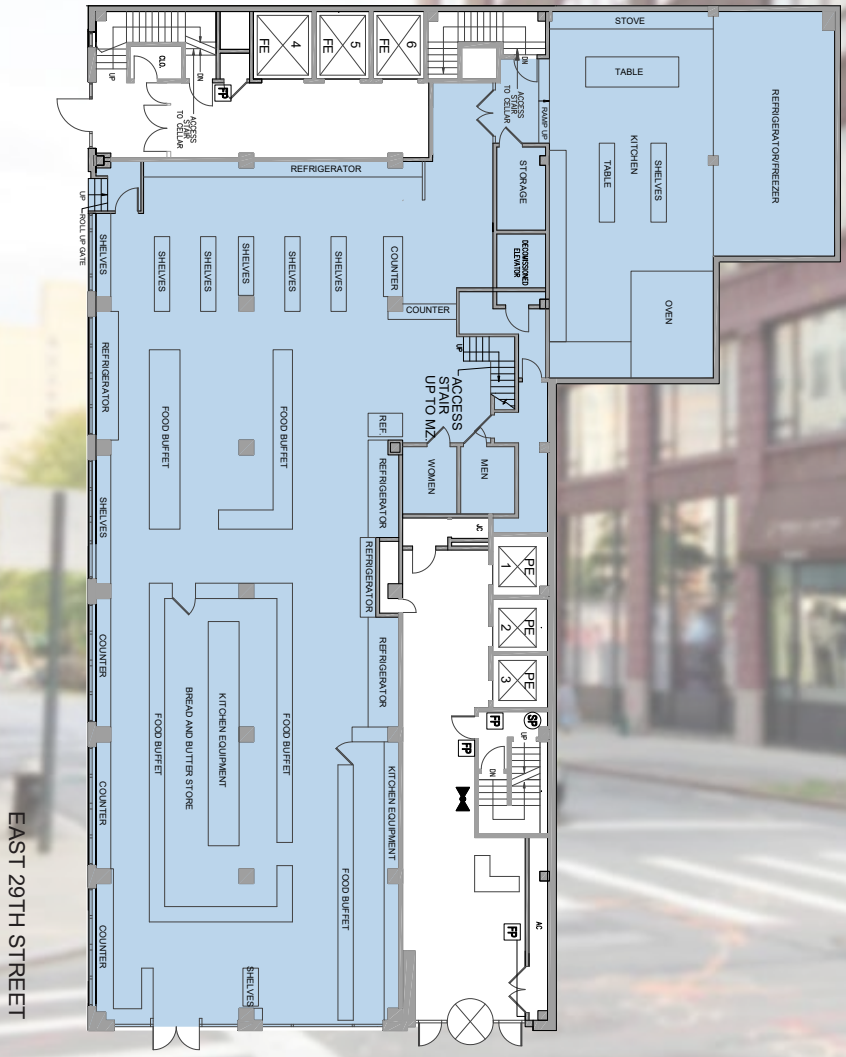
Property Description

- Space is in turnkey condition
- New kitchen installation on Ground Floor and walk-in refrigerator
- A blocks South of the 6 Train



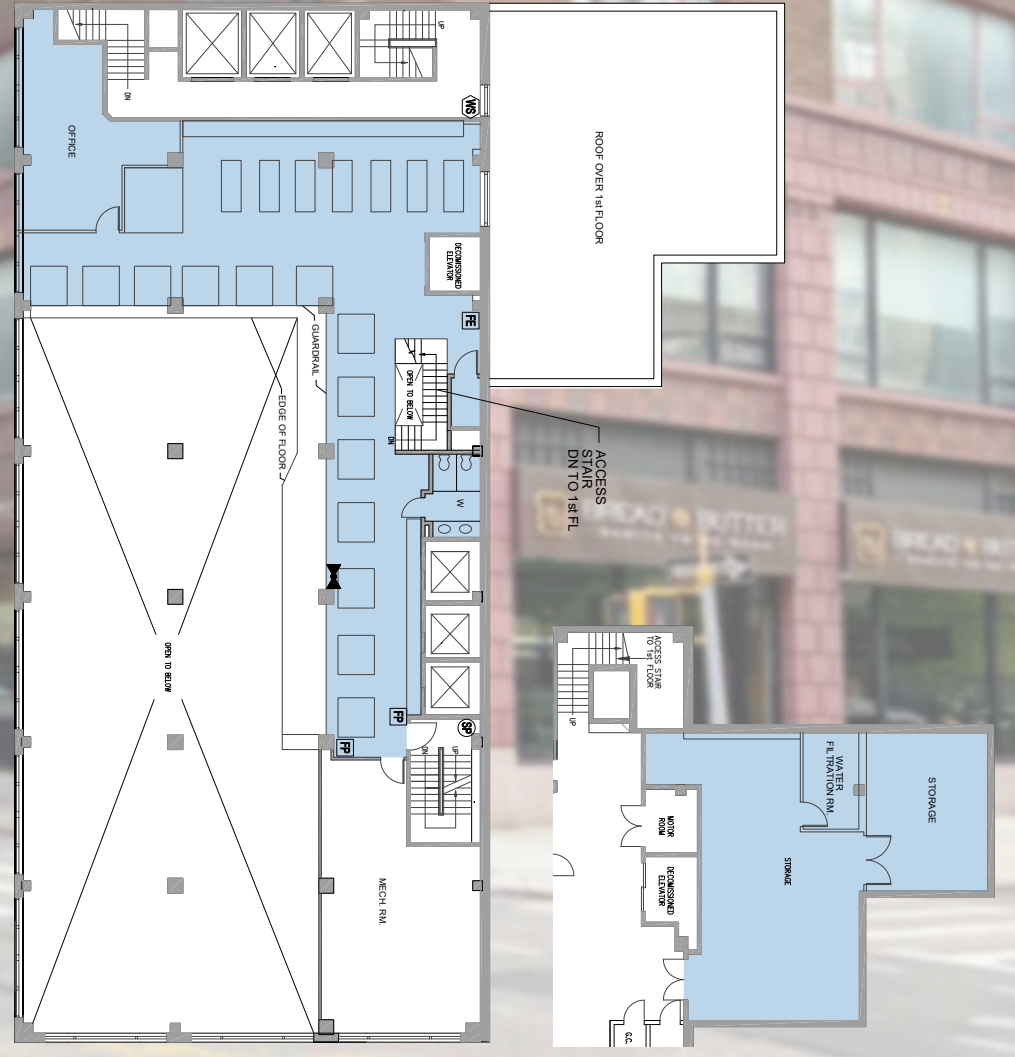
Plans

Ground floor, Mezzanine and basement



PARK AVENUE SOUTH

EAST 29TH STREET

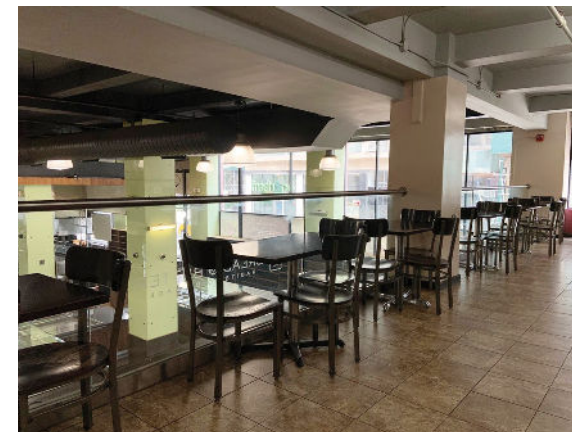
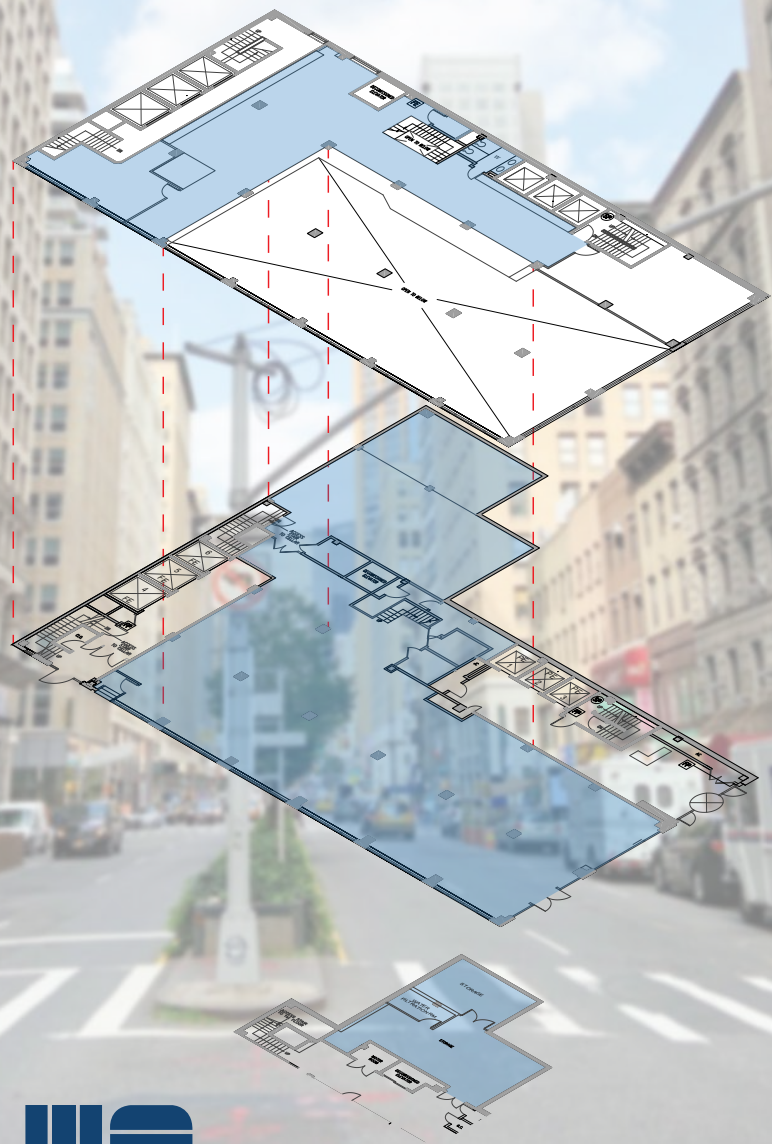


PARK AVENUE SOUTH

EAST 29TH STREET

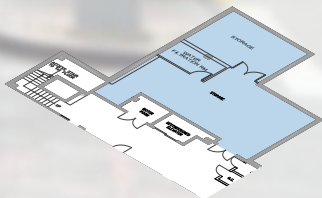
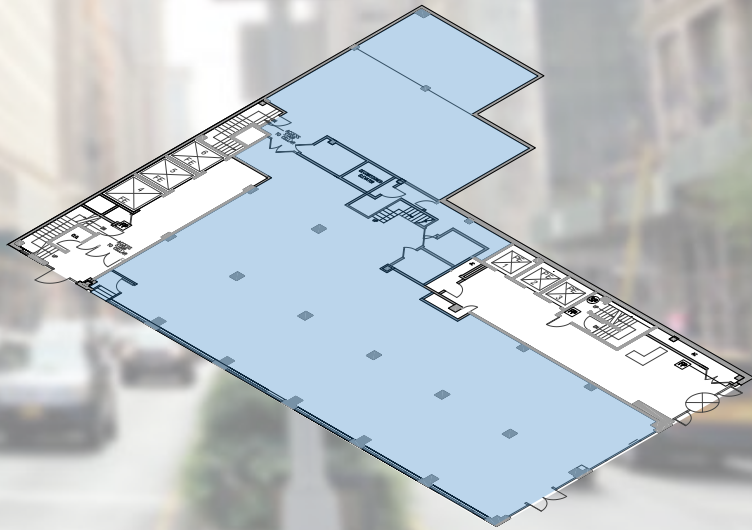
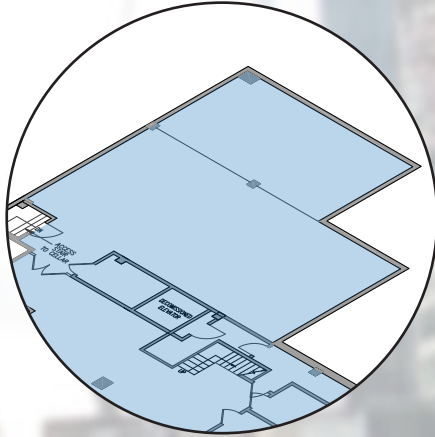


Mezzanine

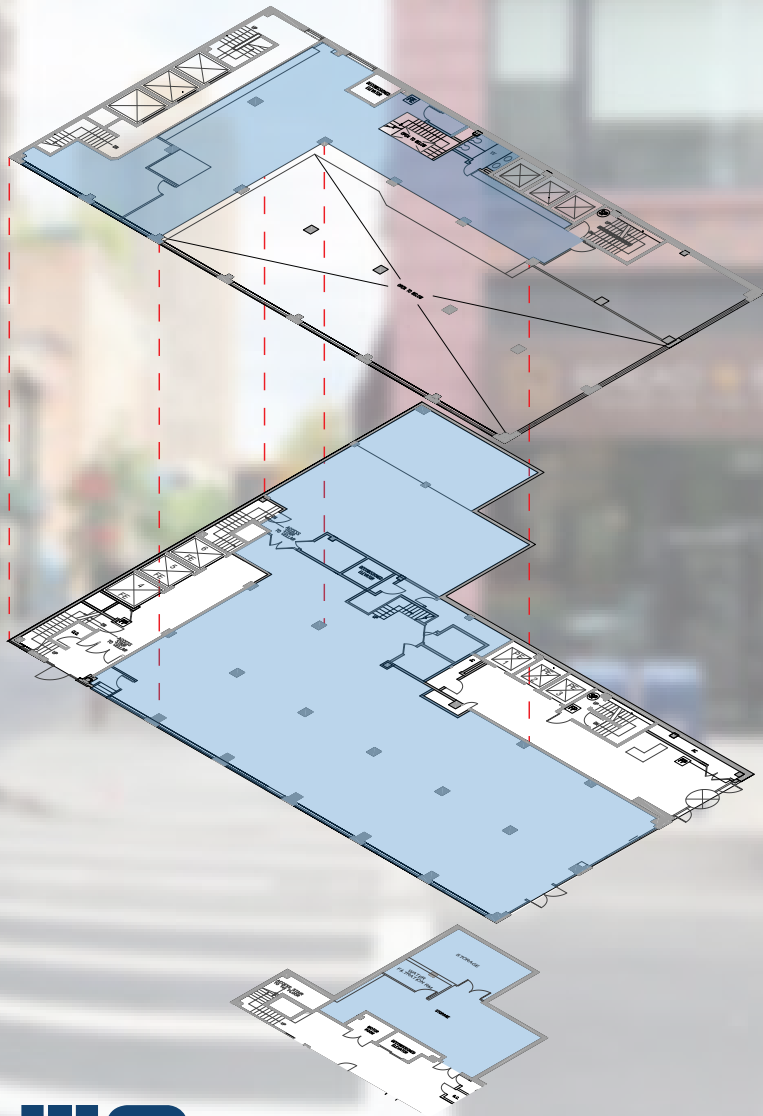


419 Park Avenue South | Retail

Kitchen



Ground





WALTER & SAMUELS, INC.

Owners & Managers

PETER WEISS

Senior Executive Managing Director
212.696.7161
pweiss@walter-samuels.com

STEVE FOREST

Senior Executive Managing Director
212.696.7113
sforest@walter-samuels.com